



**WELCOME TO
OUR HOME**

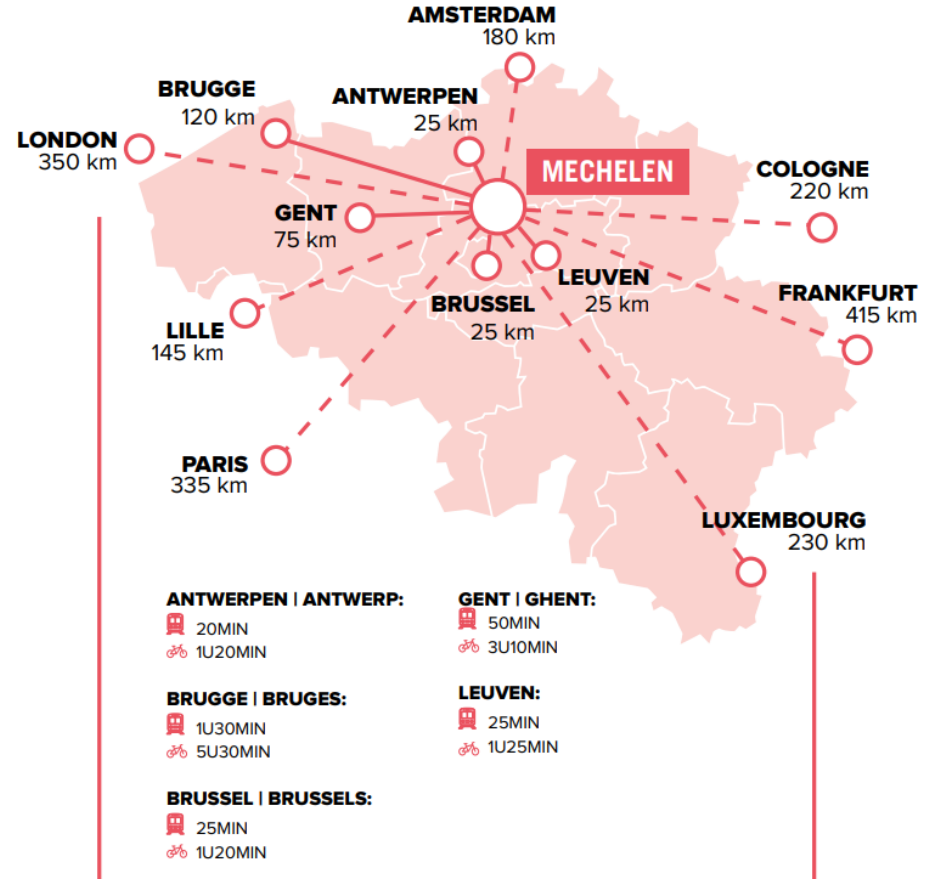


**VISIT
MECHELEN** 

THE BEATING HEART OF FLANDERS



Mechelen is situated in the heart of Flanders, midway between Brussels and Antwerp. Whether you are travelling by train, car, or plane, you'll find that getting to Mechelen is easy. From Brussels Airport to Mechelen is a mere 11 minutes by train. What's more, once you're in the city, you'll realise that you can easily walk from the centre to the beguinage or the green fringe in no time at all.



HOW TO GET TO MECHELEN

VISIT 
MECHELEN 

HOW TO GET TO MECHELEN

By bicycle

The most enjoyable way to explore both the city centre, a restricted traffic zone, and the verdant outskirts of Mechelen is by bicycle. Within the city ring, a car is not allowed to overtake a cyclist, in a so-called 'fietsstraat' (bicycle street). All over the city, you can find plenty of (covered) **parking spaces for your bike**. You can even discover one of Flanders bicycle superhighways.

You can't bring your own bike? Don't worry, there are many options to rent a bike: <https://visit.mechelen.be/bike-hire>

By Train:

Thanks to its central location, Mechelen is easy to reach by train from practically any Belgian or European city. It only takes **20 minutes from Brussels, Leuven and Antwerp**.

Mechelen has 2 stations: **Mechelen Central** and **Mechelen-Nekkerspoel**. Both stations are walking distance from the city centre. From Mechelen Central it is about a fifteen-minute walk to the Grote Markt, whilst it takes barely 10 minutes from Mechelen-Nekkerspoel. You should bear in mind that not all trains stop in Mechelen-Nekkerspoel.

By Car:

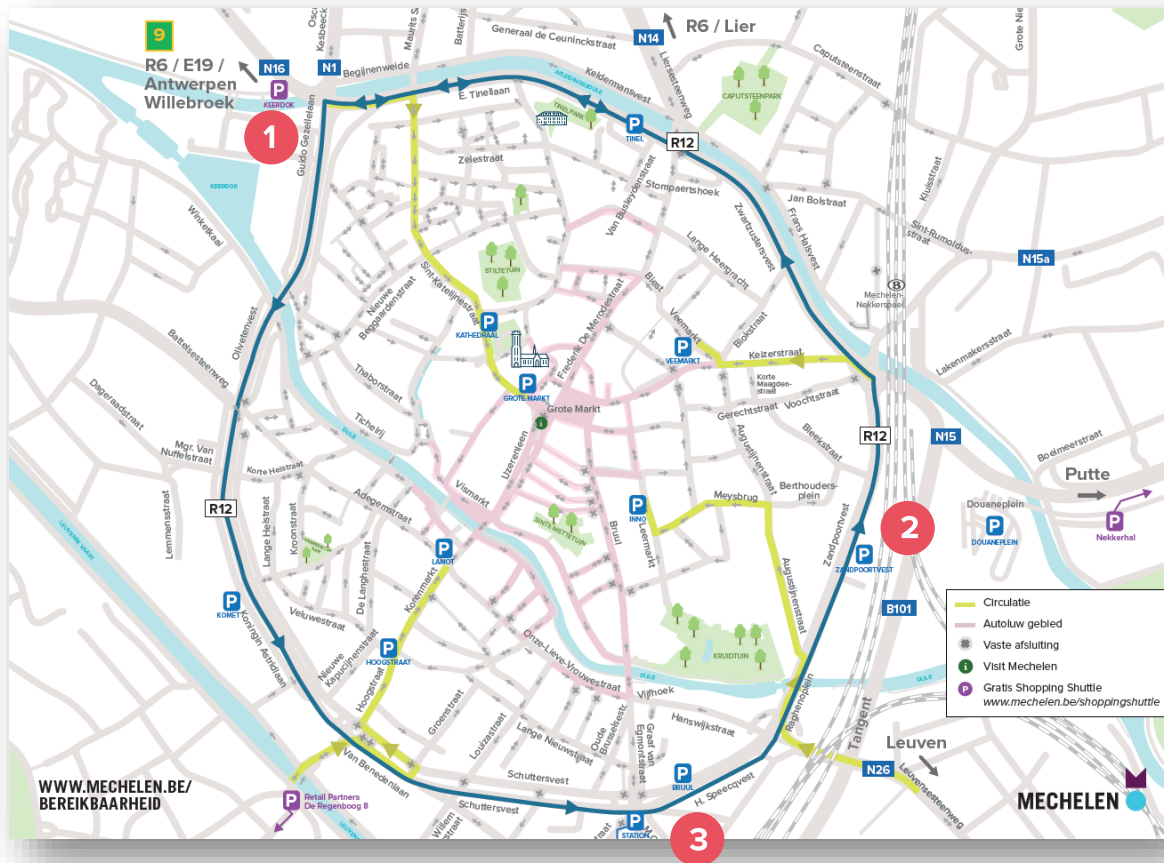
Mechelen is easy to reach from our **neighbouring countries** and also **the perfect place from which to explore Flanders**. If you are coming from the Netherlands you will be in Mechelen in no time via Antwerp. Coming from Germany the easiest is to drive via Liege and from France the motorway past Brussels takes you right to Mechelen.

On the E19 motorway between Antwerp and Brussels you have a choice of **exit 9** (Mechelen-Noord) and **exit 10** (Mechelen-Zuid). After that follow directions to the desired **car parking**.

More detailed info and maps on <https://visit.mechelen.be/getting-there>

- ! The **restricted traffic zone** in the centre of Mechelen is **expanded**. **Between 11.00 and 18.00 hrs**, motorized traffic is not permitted there.
- There are currently a series of roadworks on Mechelen's city ring. More info on these works you find here : [roadworks on the city ring](#)

CAR PARKING



We recommend the following car parkings for your convenience

1 Parking Keerdok

Antonia Wolversstraat 1,
2800 Mechelen
*15' walk
Or take the boattaxi*

2 Zandpoortvest

Zandpoortvest 15-29,
2800 Mechelen

10' walk

3 Stationsparking

via Jubbellaan (Tunnel Tangent),
or Motstraat (direction Leuven)

15' walk

FROM BRUSSELS AIRPORT

- **By Train** *(level -1)*
Brussels Airport railway station is on **level -1**. A new, direct express train link will have you in Mechelen Central Station in just eleven minutes! A ticket costs approx. €10,70.
More info: www.nmbs.be
- **By Bus** *(level 0)*
You'll find the airport bus station on **level 0**. De Lijn provides a direct bus service to Mechelen station twice an hour, including lines 282, 681, 682, 683 and 686. Bus line 686 only runs on weekdays. The bus journey lasts 45 minutes. A ticket costs approx. €3.
www.delijn.be
- **Rental car** *(level 0)*
Various car hire companies, including Hertz, Avis and Europcar are situated on **level 0**. On leaving the airport car park, you immediately come to the motorway. Travel towards Antwerp (E19) and take exit 10 (Mechelen-Zuid) or exit 9 (Mechelen-Noord).
www.brusselsairport.be

HOW TO FALL IN LOVE

VISIT 
MECHELEN 

ALLOW MECHELEN TO SURPRISE YOU



Stroll from one sight to another attraction. All the city's highlights are within walking distance of each other. Take your time to look around as you walk.

Historic buildings and narrow streets will take you on a journey back in time. Get a taste of Mechelen in the city's many quaint pubs and restaurants. You won't feel rushed because the city centre is largely car-free.

The people of Mechelen are always friendly and will gladly share their insights.



PROUD OF PAST AND PRESENT



One of the first things you will notice when you visit Mechelen are the many cyclists, proud to live in the city that was declared Flanders' Cycling City 2022. Several decades ago, the waterways in the city centre were covered over, but in recent years many of the brooks have been reinstated along with green spaces. Sustainability is a major focus for us. And this has not gone unnoticed in the outside world. Indeed, in 2020 Mechelen was awarded the title of European Green Leaf City, making us Europe's most sustainable city that year. Mechelen is constantly changing and its thriving architectural scene welcomes innovation. However, the city still recognizes the importance of its heritage. We have over 300 listed buildings in our care – more even than Bruges.



POCKET-SIZE WORLD CITY



Stroll from one sight to another attraction. All the city's highlights are within walking distance of each other. Take your time to look around as you walk. Historic buildings and narrow streets will take you on a journey back in time. Get a taste of Mechelen in the city's many quaint cafes and restaurants. You won't feel rushed because the city centre is largely car-free. The people of Mechelen are always friendly and will gladly share their insights.

Tip from Elderman Arthur Orleans: take the boat taxi

Explore Mechelen from the water. In the city centre, historic waterways (vlietjes) meander between the streets. The floating Dyle towpath takes you past the charming houses on the Dyle, between Haverwerf and the Botanical Gardens. But also enjoy a boat trip on the Dyle, as a boat taxi from the car park to the Lamot Conference and heritage centre or as a short trip where you can discover the city from a different perspective.

YOU WANT TO FIND OUT EVEN MORE?



Then surf to the following websites for more interesting facts, info and tips about our beloved city and home, called Mechelen

- **Visit Mechelen**
<https://visit.mechelen.be/en>
- **Top 10 things to visit in Mechelen**
<https://visit.mechelen.be/en/top10>
- **Where to sleep?**
<https://visit.mechelen.be/accommodation>
- **Mobile phone app ‘Visit Mechelen’**
<https://visit.mechelen.be/en/mobile-app>
- **Digital inspiration brochure**
https://visit.mechelen.be/visitmechelen_pr esstradebrochure_nl

