

WELCOME

16th of November 2022

It takes a village to raise a child

Join us!

Shared vision supporting intersectoral networking

Presented by City of Leiden and City of Mechelen and Samen Ondernemen Leren (SOL)

16th of November 2022

It takes a village to raise a child

Join us!



Check-in

Two cities building a village

- City of Leiden
- City of Mechelen

Lessons learned

Check-out

Checking-in

Name?
Nationality ?
Policy or operational level?



Checking-in



Who is in your inner circle?

Who is still close by?

Who else lives in the village?



City of Leiden



Difficult search for partners

- High workload
- New contracts
- Reorganizations

- ✓ Start before the start
- ✓ know your network

SOL & PIT



Dilemma

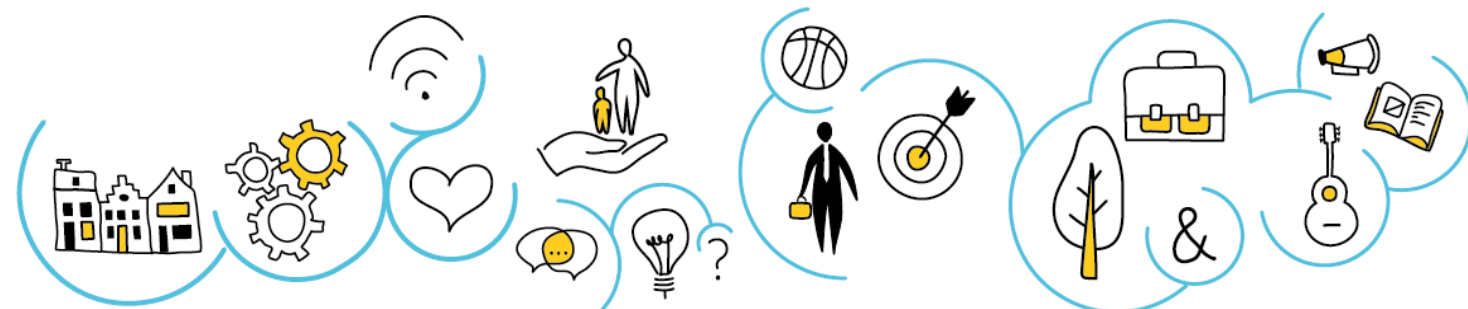
Top down or Bottom up

- Targets and deadlines
- Distrust
- staff-change
- Training/ intervision to involve the network



Strengthen the connection between learning at school and learning in leisure time; (for example rich school day)

Provide an accessible point of contact between welfare and education



Mechelen

New Authority in the community network

Intersectoral cooperation based on a shared vision on cooperation

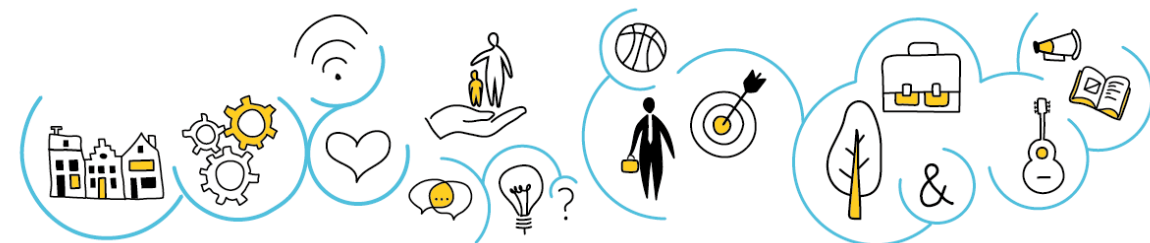
Active and strength-oriented

intersectoral network of professionals who care for:

- each other
- children, young people and families

Common language and vision:

- as a framework for cooperation
- as a framework for action



Mechelen

New Authority in the community network

Train – Meet – Give and get support

157 professionals trained = members of the village
37 organizations represented

8 two-day trainings
monthly meetings since April 2020

What can I do?

*"We do not get overwhelmed by the enormity of problems,
we do not set ourselves the goal of solving everything.
The goal is to support each other, by taking action however small.
We are each other's supporters."*

You only have **control over yourself**.

Increase your presence:

"I am your teacher, educator, parent,
youth worker, ... I am not leaving,
I have a task, a responsibility."

Strengthen **vigilant care** through
presence increase, **consider the 3
levels**: open dialogue, targeted questions
and actions, on-sided action.
(**autonomy - protection**)

Break the secrecy or isolation and seek
support, **put your village to work**.
Being concerned together also helps.
Create a we.

**Developmental needs of children and
young people at the centre:**
set relationship gestures, focus on contact
and connection.

**Avoid escalation,
consider the delayed response**
"Forge the iron when it is cold!"

**Mistakes cannot be avoided but
can be repaired.**

Actively resist, engage,
dare to think and act small.
'Small solutions' sometimes have a
bigger impact than you think.

And above all:
**Persevering is more important
than winning!**

What's the impact?

"Very strong feeling of not being alone. Great to find solutions together with you."
(Teacher primary education)

"I have experienced first-hand what this way of working together can mean.
Result?
I was no longer alone and the boy is now going back to school."
(police officer)

"Another good dose of positive vibes! Very much needed!"
(Family support worker)

This is different. Here there are professionals from police, education, community and youth work, These are partners, I would otherwise never involve in consultation moments. It's these people who give a different perspective on your questions.
(Teacher primary education)

What's the added value?

- From (un)power to power thinking
- Creating hope
- Shared responsibility
- Dynamics

(Research, Roos Steens, 2021)



Lessons learned

What do we take away as local government?

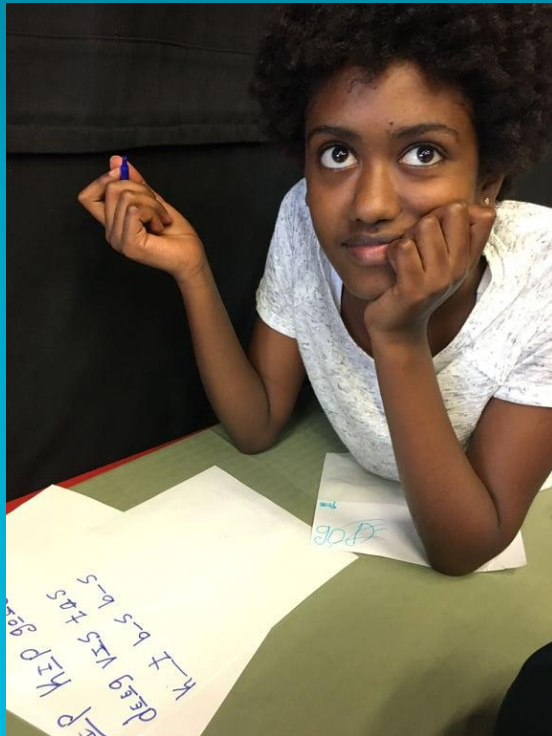
Make time and space for vision creation because it's a necessary building block to enable an integrated approach

Eliminate barriers to enable the development of an integrated support and education approach.

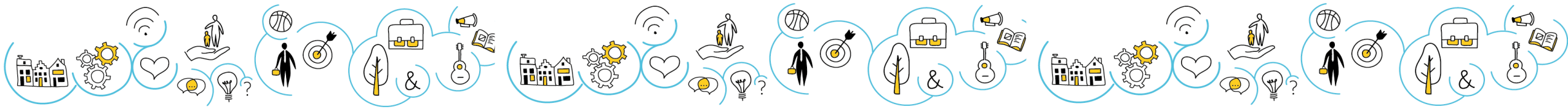
Create local coordination and control when working towards an integrated approach.



Checking-out



“The people who are crazy enough to think they can change the world, are the ones who do”





THANK YOU!

Sofie Geens: sofie.geens@mechelen.be

Birthe Blok: b.blok@leiden.nl

Edith Wieldraaijer: ewieldraaijer@solnetwerk.nl

